

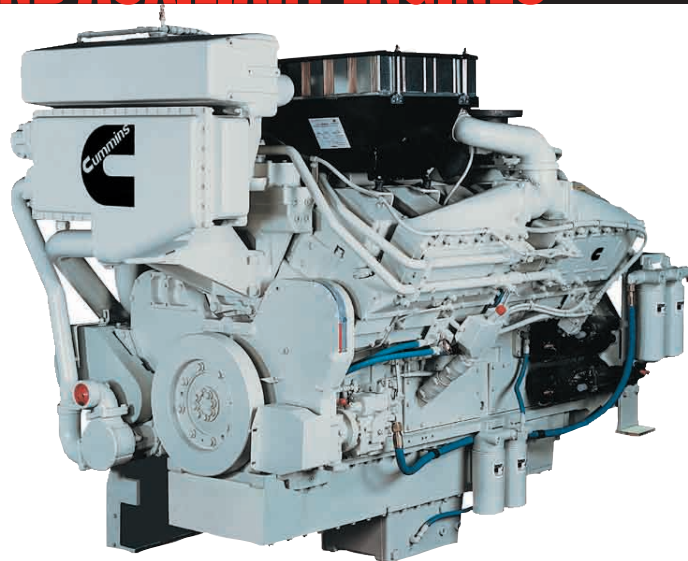
KTA38

MARINE PROPULSION AND AUXILIARY ENGINES



SPECIFICATIONS

ENGINE TYPE	V-12 CYLINDER, 4 STROKE DIESEL
BORE & STROKE	159 mm x 159 mm (6.25 in x 6.25 in)
DISPLACEMENT	38 L (2300 in ³)
ROTATION	COUNTERCLOCKWISE FACING FLYWHEEL
ASPIRATION	TURBOCHARGED/AFTERCOOLED
EMISSIONS	IMO



RATINGS

ENGINE MODEL	OUTPUT POWER			ENGINE SPEED RPM	RATING DEFINITION	FUEL CONSUMPTION** L/hr (gal/hr)
	kW	HP	kWe*			
VARIABLE SPEED						
KTA38-M0	559	750	-	1600	CONTINUOUS	102.6 (27.1)
KTA38-M0	597	800	-	1800	CONTINUOUS	106.4 (28.1)
KTA38-M0	634	850	-	1800	CONTINUOUS	115.9 (30.6)
KTA38-M1	671	900	-	1600	CONTINUOUS	120 (31.7)
KTA38-M1	746	1000	-	1800	CONTINUOUS	132.3 (34.9)
KTA38-M1	821	1100	-	1800	HEAVY DUTY	144.8 (38.3)
KTA38-M2	783	1050	-	1600	CONTINUOUS	138 (36)
KTA38-M2	895	1200	-	1800	CONTINUOUS	155.2 (41)
KTA38-M2	969	1300	-	1800	HEAVY DUTY	158 (41)
KTA38-M2	1007	1350	-	1900	HEAVY DUTY	173 (46)
KTA38-M2	1007	1350	-	1950	HEAVY DUTY	174 (46)
KTA38-M2	1044	1400	-	1950	MCD	179 (47)
KTA38-M2	1119	1500	-	2050	INTERMITTENT	198 (52)
FIXED SPEED						
KTA38-D(M1)	746	1000	716	1500 (50 Hz)	PRIME	91.7 (24.2)
KTA38-D(M1)	821	1100	788	1800 (60 Hz)	PRIME	104 (27.5)
KTA38-D(M1)	880	1180	845	1500 (50 Hz)	PRIME	104.1 (27.5)
KTA38-D(M1)	970	1300	931	1800 (60 Hz)	PRIME	122.2 (32.3)

* kWe reflects the approximate amount of power available when used in a keel cooled genset configuration

** Average fuel consumption based on ISO 8178 E3 Standard Test Cycle (variable speed models) and ISO 8178 D2 Standard Test Cycle (fixed speed models)

THE CUMMINS ADVANTAGE

- 24 Hour Customer Support
- Reliable & Durable Products
- Best in Class Life Cycle Cost
- Comprehensive Global Warranty

EVERY™ PORT.

KTA38

MARINE PROPULSION AND AUXILIARY ENGINES



FEATURES AND BENEFITS

Engine Design - Low profile for ease of installation and service. Replaceable wet cylinder liners offer longer life and lower rebuild cost. Gallery cooled pistons for maximum durability

Fuel System - Dependable Cummins PT fuel system can be operated mechanically or with CENTRY electronics for precise engine fueling. Step Timing Control (STC) allows for smooth engine acceleration under load

Cooling System - Keel cooled or engine mounted plate heat exchanger for reduced installation cost and less maintenance. Spin-on Cummins water treatment filters for protection against cooling system corrosion

Exhaust System - Dry exhaust manifold with water shielding for reduced fuel consumption and improved performance

Air System - Marine grade air filters with air inlet restriction indicator. Twin Cummins Turbo Technologies turbochargers optimized for marine usage

Lubrication System - Standard (114 L [30 gal]) or high capacity (185 L [49 gal]) marine grade oil pan. Cummins spin-on oil filter cartridge available handed for simplified service

Electronics - 24-volt standard electrical system with 12-volt option available. Marine grade wiring harness

Certifications - Complies with IMO emissions regulations. Certificates of compliance are available from the U.S. EPA and Lloyd's Register of Shipping. Consult your local Cummins professional for a complete listing of current marine agency approvals for this engine

Optional Equipment - Contact your local Cummins professional for a list of optional equipment available on this engine

- Centinel™ Oil Management System allows for extended or eliminated oil changes
- Prelub starter protects against dry starts
- Direct mounted front power take-off
- Duplex lube and fuel filtration
- Engine room & pilot house panel with analog gauges

DIMENSIONS

LENGTH	2152 mm	84 in	KC
WIDTH	1462 mm	58 in	
HEIGHT	2083 mm	82 in	
WEIGHT	4218 kg	9300 lb	

Dimensions and weight may vary based on selected engine configuration

EVERY QUESTION. ANSWERED.

Marine Website (marine.cummins.com) - Offers the most up-to-date product specifications, installation drawings and technical information as well as answers to frequently asked questions



QuickServe® Online
(quickserve.cummins.com) -

Gives easy access to parts and service information for all Cummins engines. Find the information you need with our high-speed search function and your engine's serial number

Cummins Online Product Registration - Register your Cummins engine quickly and easily on the Marine website to ensure quality parts and service

Distributor Expertise - The best source for service, parts and application assistance. To find your nearest Cummins distributor, go to the Worldwide Service Locator at wsl.cummins.com. If you need assistance beyond what your local Cummins professional has offered, contact the Regional Office for your area or email wave.master@cummins.com

Global Support Network - Backed by the strength of Cummins distribution network with marine service locations in 160 countries, Cummins engines include a comprehensive, worldwide warranty



Cummins Inc.
4500 Leeds Avenue - Suite 301
Charleston, South Carolina 29405
U.S.A.

Email: wave.master@cummins.com
Internet: <http://marine.cummins.com>

Bulletin M10055 Printed in U.S.A. REV 9/08
©2008 Cummins Inc.